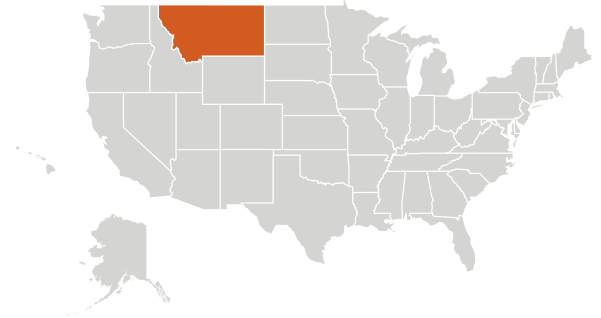




MONTANA

Montana Department of Public Health and Human Services



Montana Health Equity State Snapshot

Health equity is an economic issue as well as a social justice issue. Significant inequities and disparities exist between different racial ethnic groups, socioeconomic classes, and geographical location. Health inequities have their roots in the social determinants of health and are a reflection of the persistent inequities that exist in American society. Health inequities result in lower quality of healthcare, worse health outcomes for minority racial/ethnic populations and people with low socioeconomic status, increased direct and indirect healthcare costs, and decreased productivity. The Montana Health Equity Snapshot was developed using data from the ASTHO 2014 Minority Health Infrastructure Survey and provides an overview of the infrastructure and capacity available in state health agencies to address issues in minority health, health disparities and health equity (MH/HD/HE) in the state and across the nation.

Agency Mission

Our mission is to improve and protect the health, well-being, and self-reliance of all Montanans.

Priority Populations

Montana's priority population for targeting health equity initiatives is American Indians/Alaskan Natives.

Partnerships

Montana collaborates with a number of partners on health equity initiatives such as community health centers, insurers, state advisory boards, independent advisory boards, and tribal governments and community agencies.

Montana provides financial resources for partners such as community health centers, insurers, state advisory bodies, and independent advisory bodies.

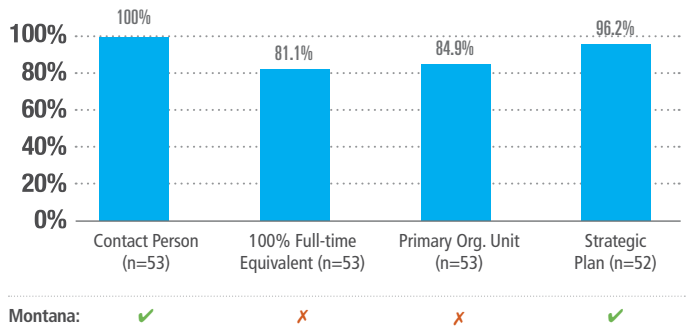
Montana takes the leadership role with partners such as community health centers, insurers, state advisory bodies, and independent advisory bodies.

Staffing

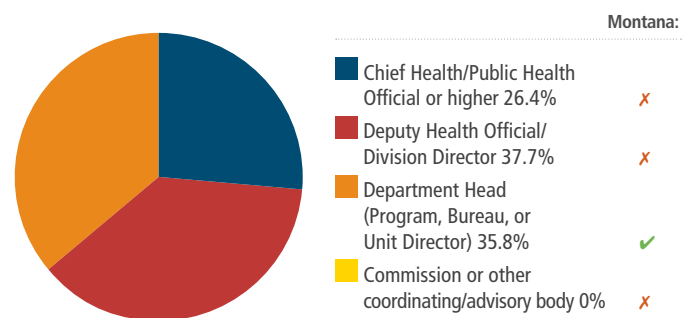
Montana has staff who work on MH/HD/HE initiatives in the following areas: chronic disease and/or health promotion, infectious or communicable disease, and tribal health.

Infrastructure for Health Equity

National Percentage of States with Organizational Resources for Addressing MH/HD/HE



National Percentage of States with Contact Person for MH/HD/HE Reporting to Leadership Positions or Bodies (n=53)



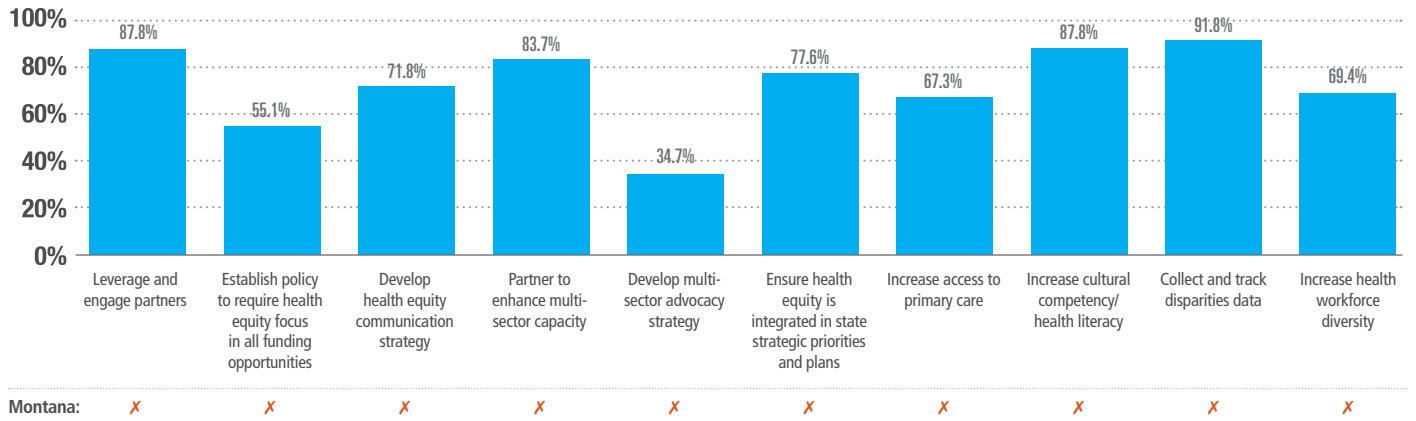
Continued »



Strategic Planning for Health Equity

Montana has an organizational strategic plan that addresses health equity and/or a health equity-specific strategic plan.

National Percentage of States with Strategies for Addressing MH/HD/HE in Strategic Plans (n=49)



Funding for Health Equity

Funding received in FY 2013 from all sources of funding	Montana (in thousands \$)	National Funding in thousands (minimum – maximum; n=47)
Federal Funds	data n/a	0 – 146,203
State General Funds	data n/a	0 – 40,000
Other Sources	data n/a	0 – 55,517

Funding received in FY 2013 by federal agency	Montana (in thousands \$)	National Funding in thousands (minimum – maximum; n=45)
HHS Office of Minority Health	data n/a	198
Centers for Disease Control and Prevention	data n/a	20,121
Health Resources and Services Administration	data n/a	16,097
Other HHS Agency	data n/a	93,000
Other Federal Agency	data n/a	46,279

Montana Department of Public Health and Safety Website <http://www.dphhs.mt.gov/publichealth>



This health equity snapshot was funded under the National Partnership for Action to End Health Disparities by the Office of Minority Health within the US Department of Health and Human Services. The opinions contained herein are those of the author(s) and do not represent or express the position, views or policies of the U.S. Department of Health and Human Services. References to specific organizations, companies, products, or services should not be considered an endorsement of such an entity, product or service by the U.S. Department of Health and Human Services.