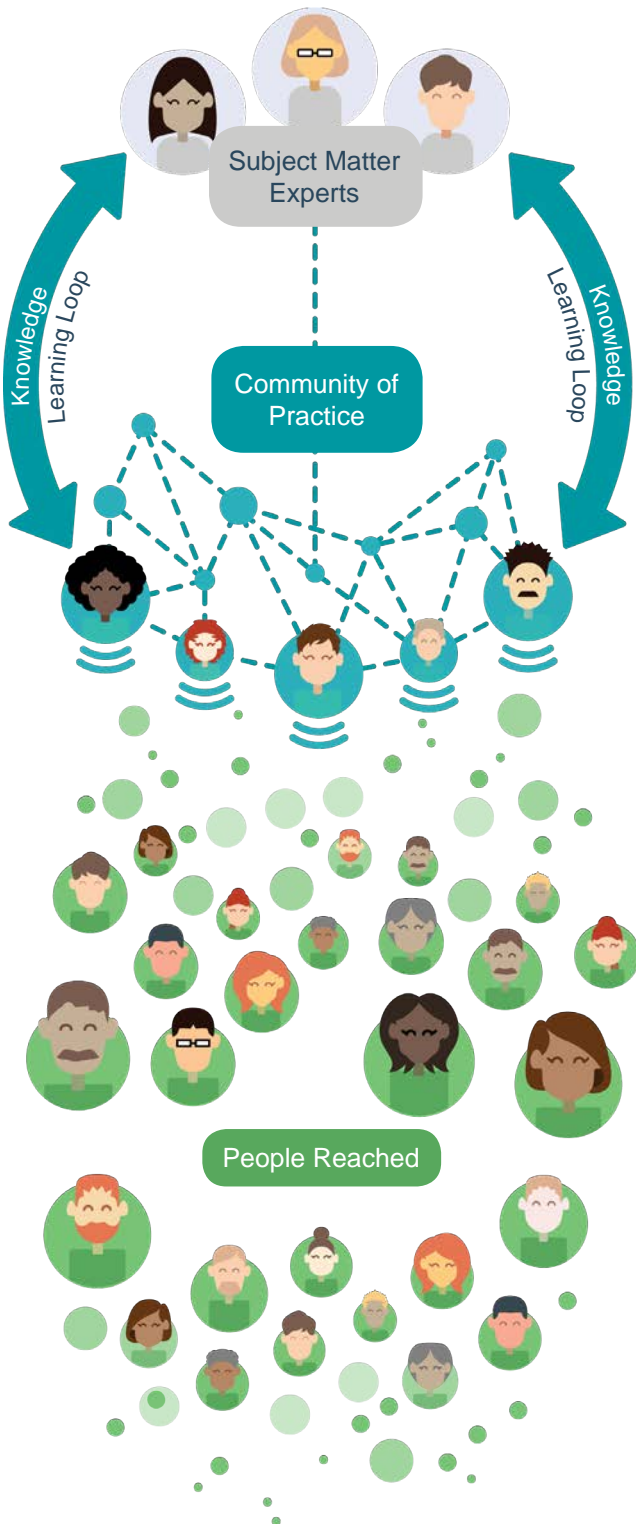


## The ECHO Model<sup>™</sup>



## Moving Knowledge, Not People

Project ECHO (Extension for Community Healthcare Outcomes) is a movement to demopolize knowledge and amplify the capacity to provide best practice care for underserved people all over the world. The ECHO model is committed to addressing the needs of the most vulnerable populations by equipping communities with the right knowledge, at the right place, at the right time.

## Four Principles of the ECHO Model



Use Technology to leverage scarce resources



Share “best practices” to reduce disparities



Apply case-based learning to master complexity



Evaluate and monitor outcomes

## Benefits of Becoming a Part of the ECHO community



Access Communities



Reduce Disparities



Promote Consistency



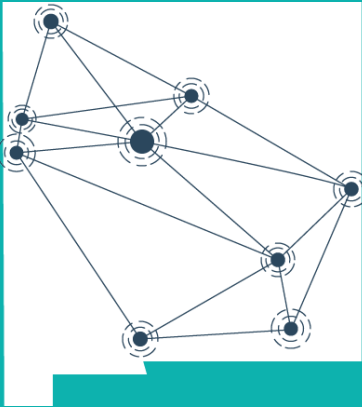
Rapid Dissemination



Increase Professional Knowledge



Isolation Decrease



## Project ECHO's Story

Launched in 2003, Project ECHO grew out of one doctor's vision. Sanjeev Arora, M.D., a social innovator and liver disease specialist at the University of New Mexico Health Sciences Center in Albuquerque, was frustrated that he could serve only a fraction of the hepatitis C patients in the state. He wanted to serve as many patients with hepatitis C as possible, so he created a free, educational model and mentored community providers across New Mexico in how to treat the condition. A New England Journal of Medicine study found that hepatitis C care provided by Project ECHO trained community providers was as good as care provided by specialists at a university. The ECHO model is not traditional "telemedicine" where the specialist assumes care of the patient, but is instead telementoring, a guided practice model where the participating clinician retains responsibility for managing the patient.

## Building a Global Community

Dozens of teleECHO™ programs addressing common complex conditions take place every week—and their reach extends far beyond New Mexico. Global interest is mounting. ECHO programs operate in North and South America, Europe, Australia, Africa and Asia.



## Changing the World, Fast

Replicating the ECHO model across the U.S. dramatically increases the number of community partners participating in ECHO, enabling more people in rural and underserved communities to get the expertise they need.

**150+**

U.S. Partners

**95+**

Global Partners

**33**

Countries

**Goal: Touch the lives of 1 Billion by 2025**