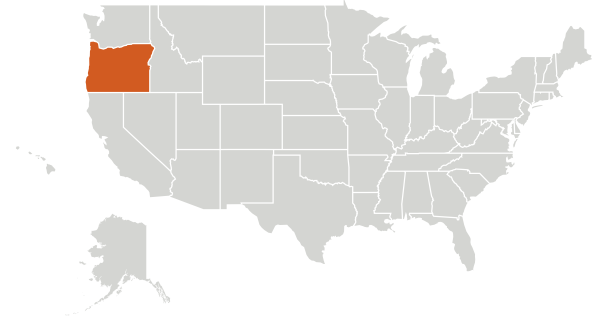




# OREGON

Oregon Health Authority



## Oregon Health Equity State Snapshot

Health equity is an economic issue as well as a social justice issue. Significant inequities and disparities exist between different racial ethnic groups, socioeconomic classes, and geographical location. Health inequities have their roots in the social determinants of health and are a reflection of the persistent inequities that exist in American society. Health inequities result in lower quality of healthcare, worse health outcomes for minority racial/ethnic populations and people with low socioeconomic status, increased direct and indirect healthcare costs, and decreased productivity. The Oregon Health Equity Snapshot was developed using data from the ASTHO 2014 Minority Health Infrastructure Survey and provides an overview of the infrastructure and capacity available in state health agencies to address issues in minority health, health disparities and health equity (MH/HD/HE) in the state and across the nation.

### Agency Mission

To protect and promote the health of all the people of Oregon.

### Priority Populations

Oregon's priority populations for targeting health equity initiatives are Black or African Americans, Hispanics/Latinos, Asians, Hawaiian Natives/Pacific Islanders, American Indians/Alaskan Natives, and rural or geographically isolated populations.

### Partnerships

Oregon collaborates with partners on health equity initiatives, such as insurers, economic and community development agencies, state advisory bodies, independent advisory bodies, housing agencies, transportation agencies, and tribal governments and community agencies.

Oregon provides financial resources to partners such as insurers, housing agencies, and tribal governments and community agencies.

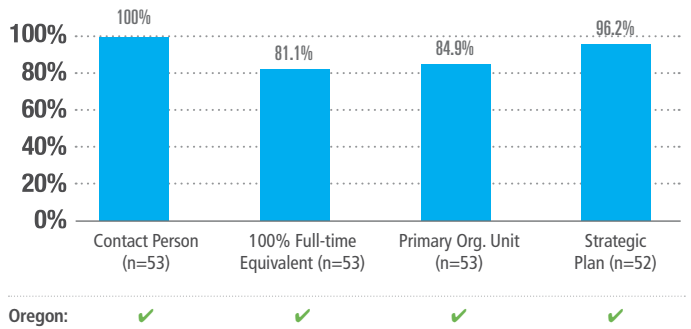
Oregon takes a leadership role with partners such as insurers.

### Staffing

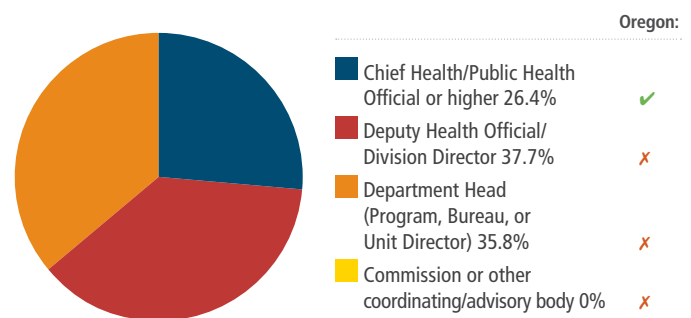
Oregon has staff who work on MH/HD/HE initiatives in tribal health and in its Office of Equity and Inclusion.

## Infrastructure for Health Equity

National Percentage of States with Organizational Resources for Addressing MH/HD/HE



National Percentage of States with Contact Person for MH/HD/HE Reporting to Leadership Positions or Bodies (n=53)



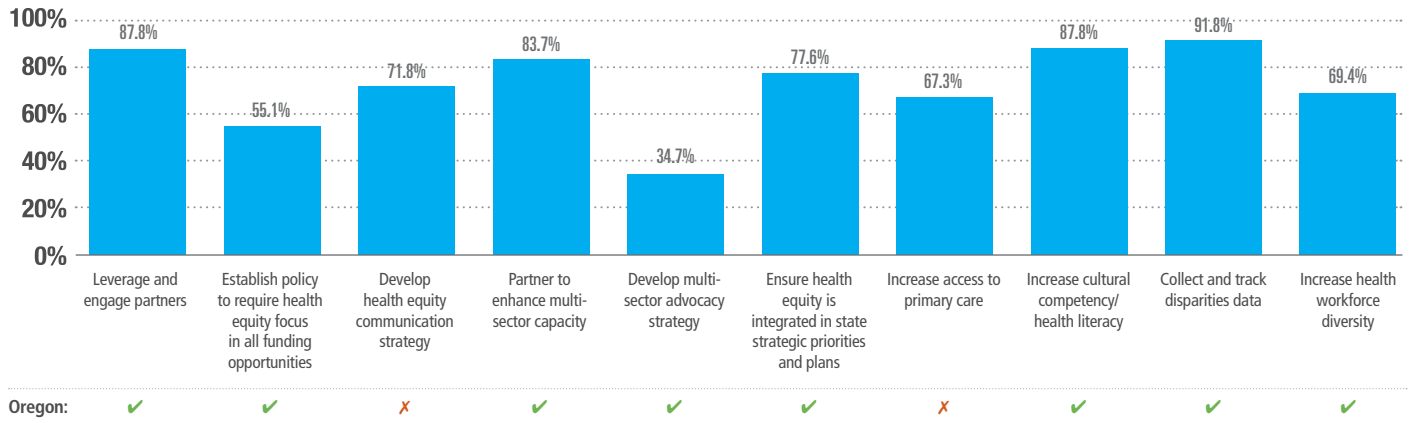
Continued »



## Strategic Planning for Health Equity

Oregon has an organizational strategic plan that addresses health equity and/or a health equity-specific strategic plan.

### National Percentage of States with Strategies for Addressing MH/HD/HE in Strategic Plans (n=49)



## Funding for Health Equity

Funding received in FY 2013 from all sources of funding	Oregon (in thousands \$)	National Funding in thousands (minimum – maximum; n=47)
Federal Funds	815	0 – 146,203
State General Funds	1,365	0 – 40,000
Other Sources	371	0 – 55,517

Funding received in FY 2013 by federal agency	Oregon (in thousands \$)	National Funding in thousands (minimum – maximum; n=45)
HHS Office of Minority Health	0	198
Centers for Disease Control and Prevention	156	20,121
Health Resources and Services Administration	53	16,097
Other HHS Agency	554	93,000
Other Federal Agency	62	46,279

Oregon Office of Equity and Inclusion <http://www.oregon.gov/oha/oei/Pages/index.aspx>



This health equity snapshot was funded under the National Partnership for Action to End Health Disparities by the Office of Minority Health within the US Department of Health and Human Services. The opinions contained herein are those of the author(s) and do not represent or express the position, views or policies of the U.S. Department of Health and Human Services. References to specific organizations, companies, products, or services should not be considered an endorsement of such an entity, product or service by the U.S. Department of Health and Human Services.