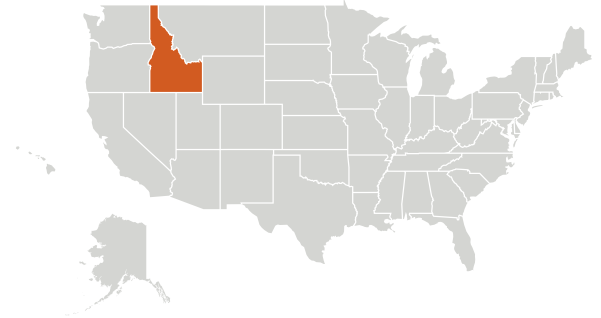




IDAHO

Idaho Department of Health and Welfare



Idaho Health Equity State Snapshot

Health equity is an economic issue as well as a social justice issue. Significant inequities and disparities exist between different racial ethnic groups, socioeconomic classes, and geographical location. Health inequities have their roots in the social determinants of health and are a reflection of the persistent inequities that exist in American society. Health inequities result in lower quality of healthcare, worse health outcomes for minority racial/ethnic populations and people with low socioeconomic status, increased direct and indirect healthcare costs, and decreased productivity. The Idaho Health Equity Snapshot was developed using data from the ASTHO 2014 Minority Health Infrastructure Survey and provides an overview of the infrastructure and capacity available in state health agencies to address issues in minority health, health disparities and health equity (MH/HD/HE) in the state and across the nation.

Agency Mission

To promote and protect the health and safety of Idahoans.

Partnerships

Idaho collaborates with partners on health equity initiatives such as community health centers, independent advisory bodies, housing agencies, tribal governments and community agencies, food agencies, and law enforcement.

Idaho provides financial resources to partners such as community health centers and tribal government or community agencies.

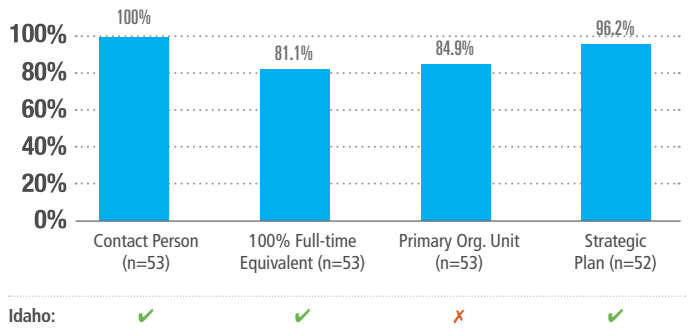
Idaho takes a leadership role with partners such as tribal governments and community agencies.

Staffing

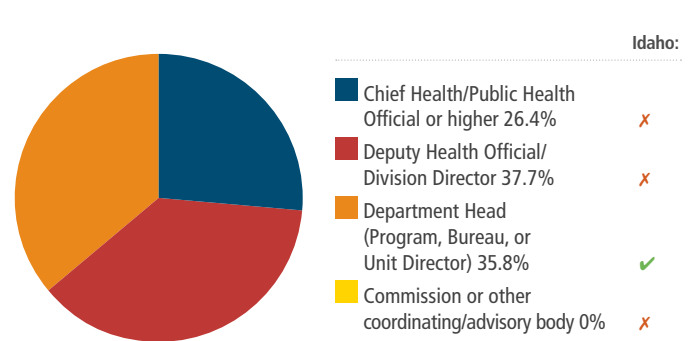
Idaho has staff who work on MH/HD/HE initiatives in the following areas: behavioral health/substance abuse prevention, chronic disease and/or health promotion, environmental health, epidemiology, oral health, and tribal health.

Infrastructure for Health Equity

National Percentage of States with Organizational Resources for Addressing MH/HD/HE



National Percentage of States with Contact Person for MH/HD/HE Reporting to Leadership Positions or Bodies (n=53)



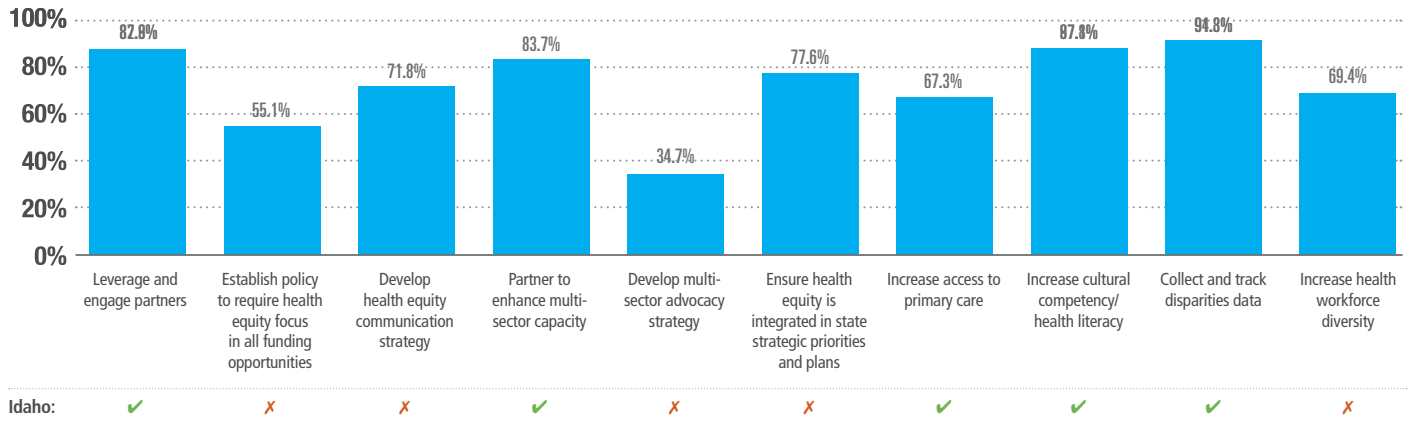
Continued »



Strategic Planning for Health Equity

Idaho has an organizational strategic plan that addresses health equity and/or a health equity-specific strategic plan.

National Percentage of States with Strategies for Addressing MH/HD/HE in Strategic Plans (n=49)



Funding for Health Equity

Funding received in FY 2013 from all sources of funding	Idaho (in thousands \$)	National Funding in thousands (minimum – maximum; n=47)
Federal Funds	0	0 – 146,203
State General Funds	0	0 – 40,000
Other Sources	0	0 – 55,517

Funding received in FY 2013 by federal agency	Idaho (in thousands \$)	National Funding in thousands (minimum – maximum; n=45)
HHS Office of Minority Health	0	198
Centers for Disease Control and Prevention	0	20,121
Health Resources and Services Administration	0	16,097
Other HHS Agency	0	93,000
Other Federal Agency	0	46,279

Idaho Department of Health and Welfare <http://www.healthandwelfare.idaho.gov/Health/tabid/60/Default.aspx>



This health equity snapshot was funded under the National Partnership for Action to End Health Disparities by the Office of Minority Health within the US Department of Health and Human Services. The opinions contained herein are those of the author(s) and do not represent or express the position, views or policies of the U.S. Department of Health and Human Services. References to specific organizations, companies, products, or services should not be considered an endorsement of such an entity, product or service by the U.S. Department of Health and Human Services.