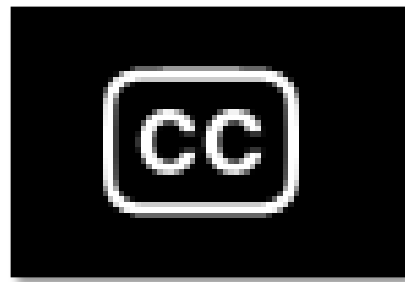




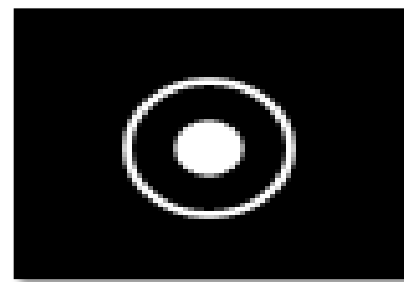
Exploring Successful Academic Health Department Partnerships

April 24, 2025 | 2-3 pm ET

Introductions and Housekeeping



Closed Captioning
is enabled.



Webinar is being
recorded.



Drop your questions
into the Q&A box.

Today's Speakers



Kathleen Amos

Director, Workforce Development,
Public Health Foundation



Amy Bonomi

Dean, College of Health and
Human Services Agency, San Diego
State University



Kimberly Giardina

Deputy Chief Administrative Officer,
County of San Diego Health and
Human Services Agency



Nicole Magnuson

Director, Live Well Center for
Innovation and Leadership

Academic Health Department Partnerships



Public Health Foundation

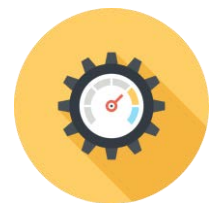
Vision:

Equitable and optimal health and well-being for all

Mission:

Advance the public health workforce to achieve organizational excellence

Experts in:



***Performance
Management***



***Quality
Improvement***



***Workforce
Development***

Council on Linkages Between Academia and Public Health Practice



An AHD Partnership...



- Joins a health department and an academic institution
- Institutionalizes collaboration
- Enhances public health education and training, research, and service

What Does an AHD Partnership Look Like?

- **Academia and public health practice working together**
- Written partnership agreement
- Collaborative public health education or training
- Joint research projects
- Shared provision of public health services
- Shared personnel or other resources

Why Create an AHD Partnership?

- Enhance capacity to address community health needs
- Better prepare students for public health practice careers
- Support recruitment of qualified professionals
- Facilitate lifelong learning
- Build and use practice-based evidence
- Maximize use of and enhance competitiveness for resources
- Meet accreditation standards
- **Improve the public health system and community health**

Who is Involved in AHD Partnerships?

ASTHO PROFILE OF STATE AND TERRITORIAL PUBLIC HEALTH VOLUME 4

Collaborating Agencies/Organizations	Exchange Information		Work Together on Projects		State Health Agency Provides Financial Resources		State Health Agency Has Leadership Role in the Partnership		No Relationship Yet		Organization Does Not Exist in Jurisdiction	
	N	%	N	%	N	%	N	%	N	%	N	%
Higher education (e.g., universities, medical schools, community colleges)	48	98%	49	100%	31	63%	24	49%	0	0%	0	0%

2022 NATIONAL PROFILE OF LOCAL HEALTH DEPARTMENTS

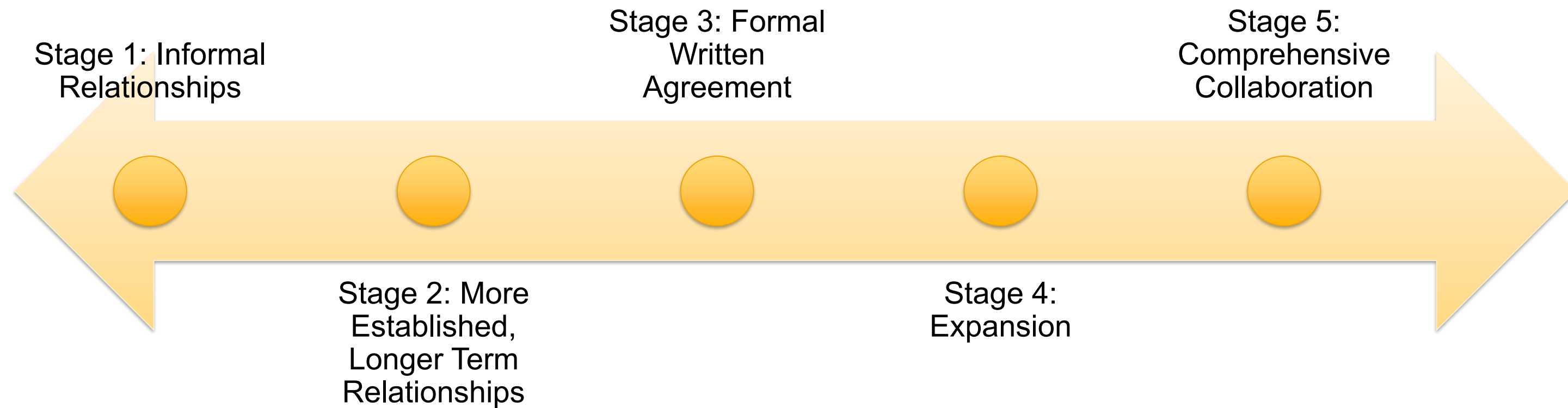


Figure 3.3 | LHD partnerships and collaborations in the past year

- Percent of LHDs working with organization in any way
- Percent of LHDs regularly scheduling meetings, have written agreements, or share personnel/resources with organization

Colleges or universities — 64% — 89%

How Do AHD Partnerships Develop?



No Two AHD Partnerships Are The Same...

➤ Different structures

- ▷ One-to-one or consortium
- ▷ Advisory board or not
- ▷ Shared staff or partners

➤ Different partners

- ▷ Health departments
- ▷ Schools or programs of public health, medicine, nursing, pharmacy, nutrition, public affairs, journalism, urban planning, law, engineering
- ▷ Hospitals or medical centers

No Two AHD Partnerships Are The Same...

➤ Different levels of formality

- ▷ Informal
- ▷ MOU or MOA
- ▷ Contract

➤ Different activities

- ▷ Education and training
- ▷ Research
- ▷ Service delivery

There Are Lots of Ways to Work Together

- Student internships and practica
- Guest lectures
- Brown bag talks, seminars, workshops
- Course auditing
- Technical assistance
- Community-based research projects
- Staffing for public health programs or events
- Surge support
- Sharing resources – library resources, meeting space
- Co-applying for grants or other funding

And Lots of Things to Think About

- Organizational strengths and weaknesses
- Available resources and gaps
- Needs that a partnership can help fill
- Match between partner organizations' resources and needs
- Strength of prior relationships
- Organizational champions
- Partnership development experience
- Return on investment



Helping AHD Partnerships Grow



Academic Health Department Learning Community

- National community of practitioners, educators, and researchers exploring and learning about AHD partnerships
- ~1,400 members



Examples
and Stories



Webinars



Partnership
Agreements



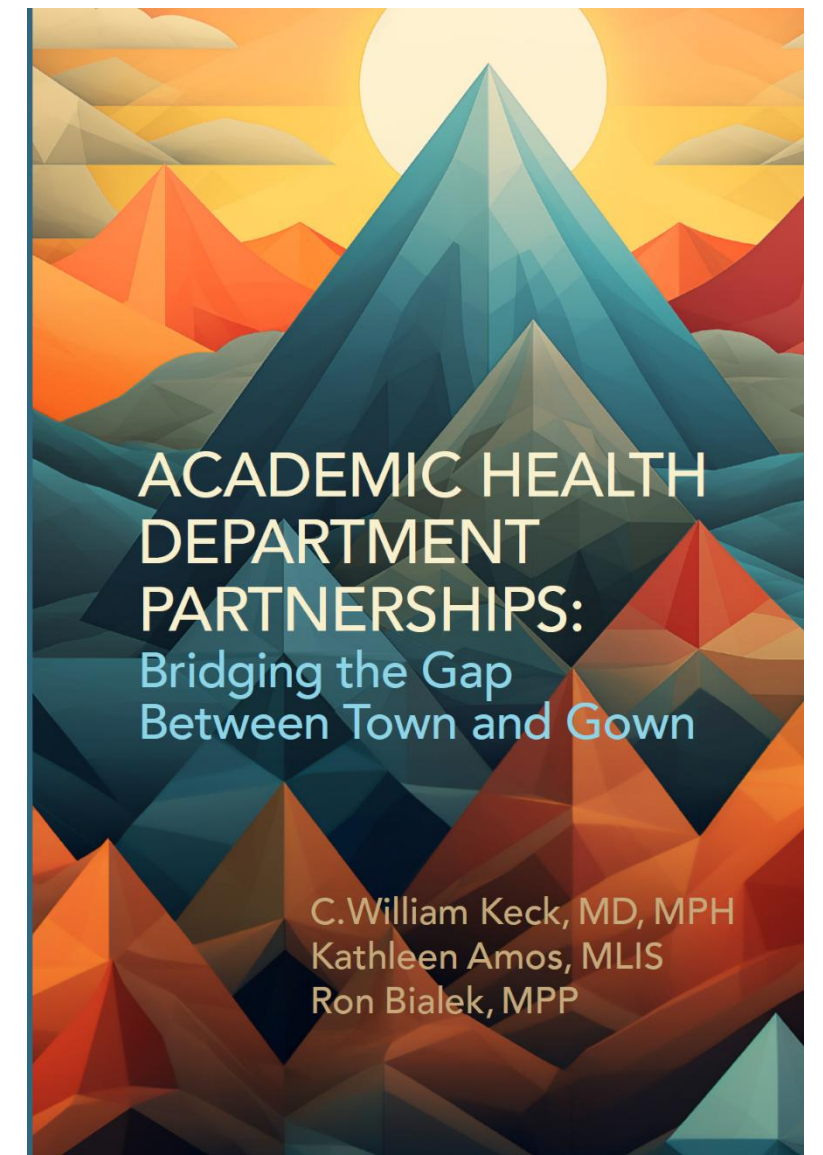
Listserv



Technical
Assistance

AHD Partnership Resources

- AHD Learning Community: www.phf.org/AHDLC
 - Peer community supporting public health practice/academic collaboration
- [AHD Webinars](#)
 - Webinars focused on AHD partnerships
- [AHD Resources and Tools](#)
 - Resources to support development, maintenance, and expansion of AHD partnerships
- [AHD Partnership Environmental Scan](#)
 - Remote assistance for health departments interested in exploring and enhancing AHD partnerships
- New AHD book – [*Academic Health Department Partnerships: Bridging the Gap Between Town and Gown*](#)





THANK YOU!

www.phf.org/AHDLC

For more information or to join, contact:

Kathleen Amos

kamos@phf.org

FROM CONCEPT TO CREATION: San Diego County's Academic Health & Human Services Department

ASTHO & PHF Webinar

April 24, 2025



**LIVE WELL
CENTER FOR
INNOVATION &
LEADERSHIP**



SDSU

San Diego State
University

SAN DIEGO COUNTY: A VIBRANT & DIVERSE BORDER COMMUNITY

- 3.3 million diverse residents
- 2nd most populous county in California; 5th in the nation
 - 18 cities, 18 federally recognized tribal reservations, 16 major naval and military installations, and unincorporated areas.





- An integrated agency including **seven service departments** providing vital health, housing & social services to San Diego County
- 1.3 million residents directly served
- More than 8,200 employees
- Over \$3.4 billion operating budget
- 30+ public facing facilities
- 350+ contracted community partners



HHSA's ACADEMIC-PRACTICE CULTURE

- Embrace our role to inspire and prepare students for health and human service careers
- Value student contributions to the agency and community
- Engage and support academic partners in research and data sharing to inform policy and practice
- Integrate faculty and staff across partners as lecturers/faculty and embedded positions
- Collaborate with communities to identify needs, set priorities, and align resources for impact

PUBLIC SIGNING OF OVERARCHING MOA IN OCTOBER 2022

- Formalized partnership between HHSA and SDSU
- Highest level leadership of both organizations including Board Supervisor and University President
- Set the stage for alignment of organizational resources to support collaboration including jointly funded director





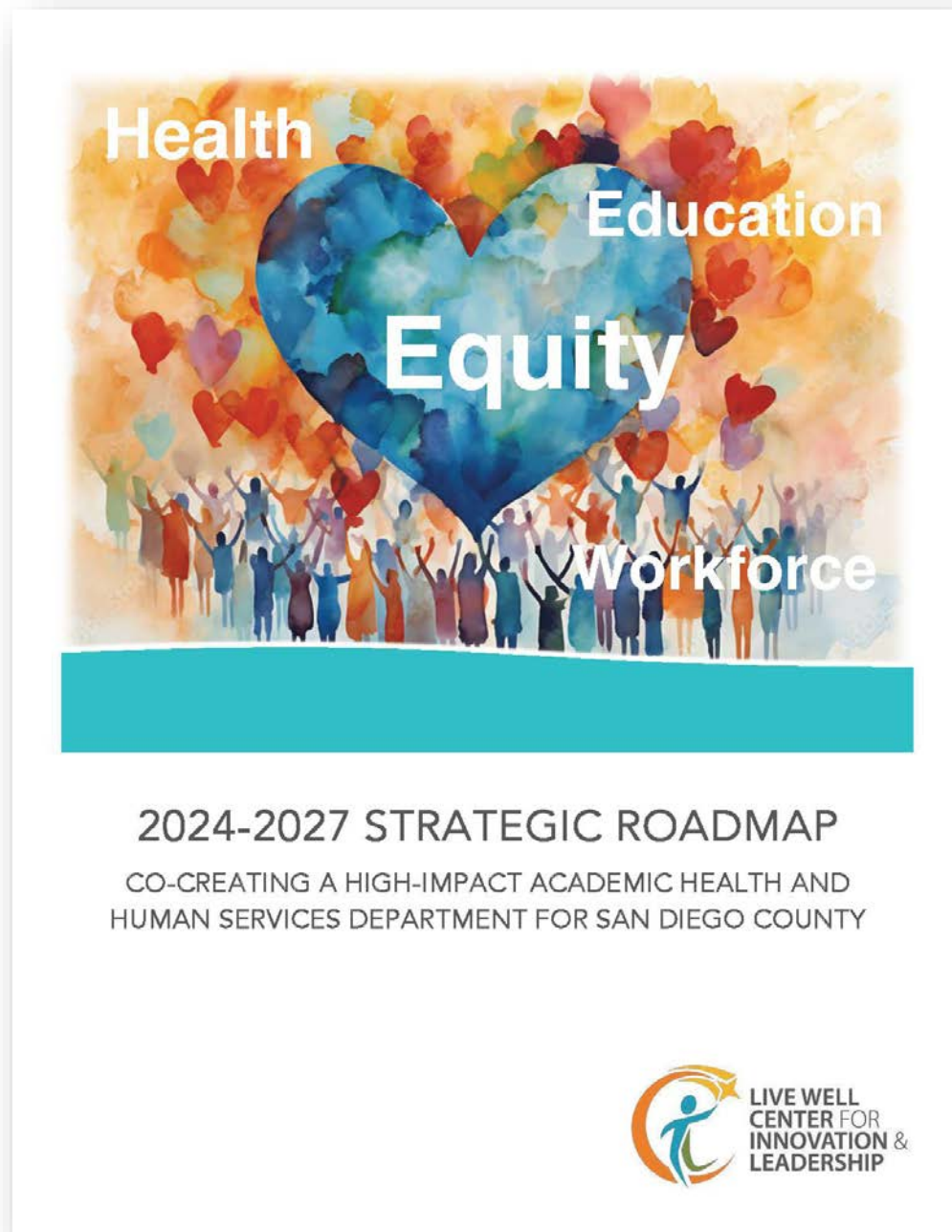
College of Health and Human Services

- One of Eight Colleges within San Diego State University
 - Federally Designated Hispanic Serving Institution and an Asian and Native American Serving Institution
 - R1 Research Status
- 5,000 Students
- 355 Faculty and Staff
- Six Prestigious Schools, plus Centers & Institutes
- 40+ Degrees including Undergraduate, Graduate & Doctoral

Opportunity for University-wide Engagement



CO-CREATED 2024-2027 STRATEGIC ROADMAP



Unanimously adopted on August 20, 2024

STRATEGIC ROADMAP FRAMEWORK



- **Priority #1: People Success** – Build a diverse, competent and engaged health and human services workforce
- **Priority #2: Research & Data Excellence** – Inform and improve academia, policy, and practice with rigorous and relevant research
- **Priority #3: Service to Community** – Integrate academia, practice, and community to advance equity and eliminate health disparities
- **Priority #4: Leadership & Sustainability** – Create a nationally recognized academic-practice partnership model with innovative leadership committed to improving academia, policy and practice

LWCIL STRUCTURE

Steering Committee

Co-chairs: Dr. Kimberly Giardina, HHSA Deputy CAO & Dr. Amy Bonomi, CHHS Dean
HHSA Department Directors & CHHS School + Center Directors

People Success

Co-chaired by Jennifer Bransford-Koons, Director Aging & Independence and Dr. Jong Won Min, Director and Professor, School of Social Work

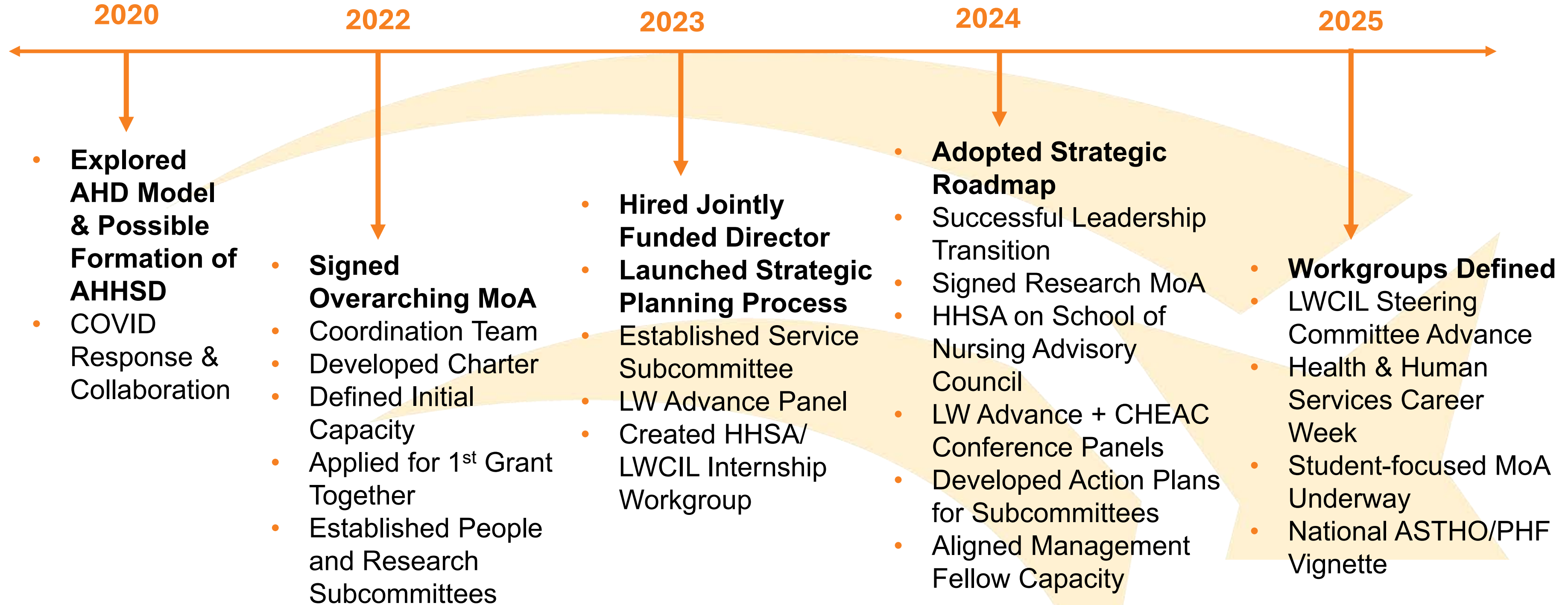
Research & Data Excellence

Co-chaired by Dr. Ankita Kadakia, Interim Public Health Officer and Dr. Corinne McDaniels-Davidson, Director Institute of Public Health, Associate Director, School of Public Health

Service to Community

Co-chaired by David Estrella, Director, Housing & Community Development Services and Dr. Mounah Abdel-Samad, Associate Professor, School of Public Affairs

OUR AHHSD JOURNEY



JOURNEY HIGHLIGHTS

Foundational

- Leadership Commitment and Engagement
- Overarching, Research and Student Field Memorandum of Agreements
- Jointly-funded Capacity
- Co-Created Strategic Roadmap

Advancing

- Co-leadership and Expanding Involvement
- Subcommittee Action Plans & Workgroup Plans
- Integration and Cascading into Organizations
- Leadership and Innovation



2025 Live Well Center for Innovation & Leadership Steering Committee Advance



PEOPLE SUCCESS FOCUS

- **Improve and Expand Student Field Experiences**
- Attract, retain, and develop a diverse, competent, and engaged workforce
- **Recruit SDSU's students and alumni to pursue careers within HHSA**
- Inspire community college and high school students to pursue health and human service careers



College of
Health and
Human Services

HEALTH & HUMAN SERVICES CAREERS WEEK

March 24-26, 2025



Three Days of Student and Alumni Events

March 24	March 25	March 26
Public Health Career Fair @ Templo Mayor Noon – 2 p.m.	Interviewing and Resume Workshop with County Professionals @ Career Services – SSE 1200 1-3 p.m. "Meet the People" Student and Alumni Networking Event with County Professionals* @ Parma Payne Goodall Alumni Center - 5-7 p.m.	County of San Diego Health & Human Services Careers Fair @ Templo Mayor - 11-2 p.m. Exploring and Pursuing County Careers. "How To" Workshop with County Hiring Professionals @ Career Services – SSE 1200 3-5 p.m.

Tabling on Centennial Way by CHHS schools and student groups March 25 & 26!



**MEET THE PEOPLE
EVENT**

PEOPLE SUCCESS: HHS Careers Week

- More than 675 connections with Students and Alumni
- Meet the People Survey Respondents
 - 92% Enjoyed the Event
 - More than 70% were inspired and learned about career pathways within the county
 - Another 50% made valuable connections
- Workshop Attendee Respondents
 - 100% Learned Valuable Information
 - 100% Will Apply Learnings to Job Search

Research & Data Excellence

Co-chaired by Dr. Ankita Kadakia, Interim Public Health Officer and
Institute of Public Health, Dr. Corinne McDaniels-Davidson, Director
Associate Director, School of Public Health

Advancing Equity Research
Workgroup

Catalyzing Collaboration &
Knowledge Sharing Workgroup

Joint Research Policy & Practice
Workgroup



LEADERSHIP & SUSTAINABILITY

- Launching as an “Executive Committee” of the Steering Committee
- Key areas of focus:
 - Aligning capacity and securing resources for sustainability
 - Further integration and cascading into organizations w/organizational strategic plan alignment
 - Consistent communication and leveraging of shared leadership voice
 - Identify opportunities for innovation

LESSONS LEARNED

- 1) Involved and Engaged Leadership
- 2) Prioritize Planning and Infrastructure Building
- 3) Invest In and Align Capacity
- 4) Clear Communication of Needs, Resources, and Opportunities
- 5) Intentional and Strategic Integration into Organizations
- 6) Start Small. Be Strategic. Then Grow!

THANK YOU

NICOLE MAGNUSON, EdLD, MBA

Director

nmagnuson@sdsu.edu



LIVE WELL
CENTER FOR
INNOVATION &
LEADERSHIP



SDSU

San Diego State
University



Save the Date

Pathways to Academic Health Department Partnerships

May 1, 2025 | 2 to 3:30 PM ET



Evaluation

<https://bit.ly/3Yfq1zj>



Questions: performanceimprovement@astho.org