

History

The State of Kentucky directs its racial/ethnic disparities (MH/HD) efforts through the Governor's Office of Minority Empowerment (GOME). GOME collects and utilizes information on the status of Kentucky's minority residents to guide and encourage health screenings and other preventive services.

Health Priorities

The Kentucky Department for Public Health (KDPH) has identified the following health priorities for the general population of Kentucky.

Health Priorities for the General Population
Newborn screening
Preparedness
Chronic diseases
Smoking prevention and cessation
Physical inactivity

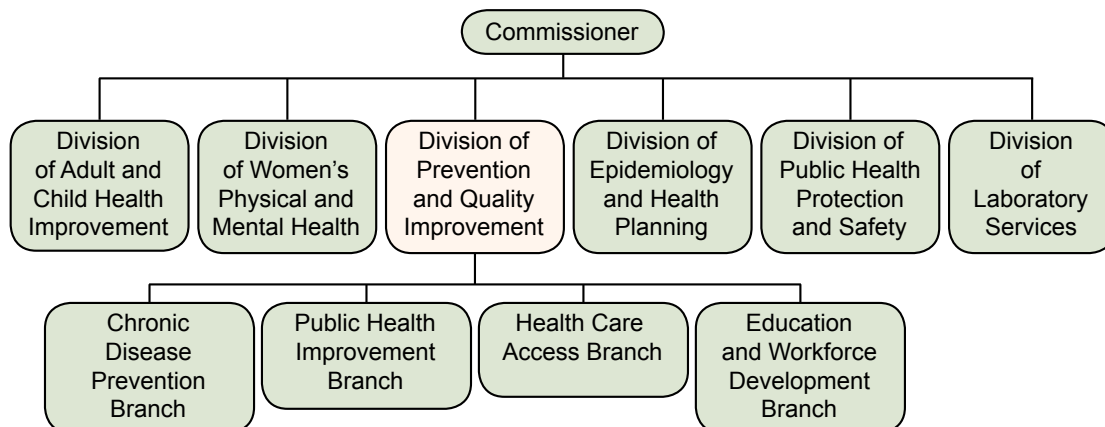
Overview

	Funding for MH/HD Activities	Personnel Dedicated to MH/HD	MH/HD Unit	MH/HD Advisory Body	State MH/HD Legislation or Mandate	MH/HD Strategic Plan	Evaluation of MH/HD Activities
Kentucky	✓	✓	✗	✗	✗	✗	✗
Total Affirmative Responses out of 46	30	38	36	36	27	36	39

Organization, Infrastructure and Resources

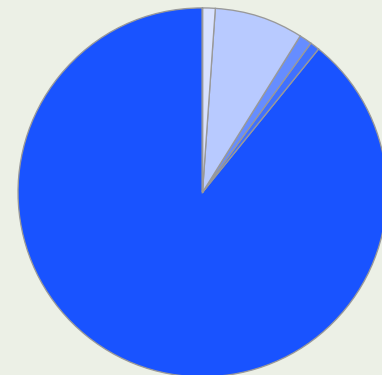
The following is a simplified organizational chart that demonstrates the location of the state's racial/ethnic minority health focal point in relation to the State/Territorial Health Official and other key public health offices:

Kentucky Department for Public Health



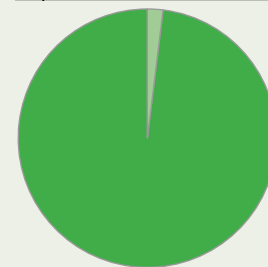
Total State Population:
4,206,074

Racial Distribution



- American Indian/Alaskan Native (0.2%)
- Asian (1%)
- Black/African American (8%)
- Native Hawaiian/Pacific Islander (0%)
- Other Race (1%)
- Two or More Races (1%)
- White (90%)

Hispanic/Latino Ethnic Distribution



- Hispanic/Latino Ethnicity (2%)
- Non-Hispanic/Latino Ethnicity (98%)

Note: People can self-identify as members of any racial group in the Census, as well as report having Hispanic/Latino ethnicity.

Source: 2006 American Community Survey, US Census Bureau

Strategic Planning

The KDPH's Division of Prevention and Quality Improvement is incorporating health disparities into its mission and planning. It is also assessing state health programs in which health disparities are most often encountered - such as HIV/AIDS, cardiovascular health and hypertension - to identify possible methods for improving their effectiveness. In addition, the KDPH utilizes data from the Behavior Risk Factor Surveillance System (BRFSS) to identify progress and areas for improvement in racial/ethnic health disparities. The information yielded by these efforts will be used to guide future MH/HD planning and activities across the Department.

Human Capital Investments

The KDPH has designated resource personnel in each of its public health divisions who coordinate and work with their colleagues in incorporating health disparity concerns and solutions into general public health planning and activities. The KDPH is also exploring the possibility of contracting staff that would dedicate 100% of their efforts to identifying, coordinating and advocating for African-American and Hispanic health issues and activities in Kentucky.

Financial Investments

Although the KDPH does not allocate financial resources specifically for state MH/HD activities, it does support MH/HD activities through the budgets of its public health divisions where MH/HD activities are conducted. It also provides monies to local health departments to support their health disparities efforts. Specific financial data on KDPH MH/HD funding streams were not available.

Activities

Hispanic Health Access

As part of its efforts to increase access to health care for Spanish-speaking residents, the KDPH supports approximately 25 local health departments in providing health information and materials in Spanish, as well as Spanish/English translation, interpretation and outreach services at local health service sites. These services were developed in response to the growth of Kentucky's Spanish-speaking population over the past decade. A large portion of this population possesses limited English language capabilities, which frequently hinder seeking or receiving essential health services. This barrier to care has resulted in significant health disparities among Hispanics in Kentucky when compared to the state's general population.

Partners and Funding

KDPH and local health departments with state and local resources

Activity Outcomes

Increased access to health care, self-care, compliance with treatment and improved health outcomes for state residents with limited English capabilities

Evaluation Methods

To be determined

Racial and Ethnic Health Status and Utilization Surveillance

The KDPH uses the Behavioral Risk Factor Surveillance System to collect data on the health status of racial and ethnic minority populations in Kentucky and analyzes data findings to identify significant health disparities in the state. With this information, the Department is able to track progress in reducing health disparities and identify areas where concerted effort is required to achieve health equity. The KDPH and the Kentucky Cabinet for Health Services also achieved the inclusion of racial and ethnic health indicators on hospitalization billing forms. These indicators will enable health care providers and officials across the state to track hospital admission patterns, and identify and target health disparities that coincide with patients' racial/ethnic backgrounds.

Partners and Funding

KDPH, health systems and providers in the state

Activity Outcomes

Improved identification, tracking and design of interventions to address racial/ethnic health disparities

Evaluation Methods

To be determined

Partnerships

- The KDPH conducts its MH/HD activities through: an agency focal point located in the Division of Prevention and Quality Improvement, a network of MH/HD resource people located in all public health divisions of the Department, and through its financial and technical support of MH/HD activities and partners at local health departments.

Kentucky's primary contact for racial/ethnic minority health and health disparities is:

Charles Kendell
 Chief of Staff
 Kentucky Department for Public Health
<http://chfs.ky.gov/dph/default.htm>
 Phone: (502) 564-3970