

History

The Alabama Office of Minority Health (OMH) was established by the State Health Officer in 1991.

Health Priorities

The **Alabama Department of Public Health (ADPH)** has identified the following health priorities for the people of Alabama:

Health Priorities for General Population
Infant mortality
Obesity
Diabetes
HIV/AIDS
Cardiovascular Disease

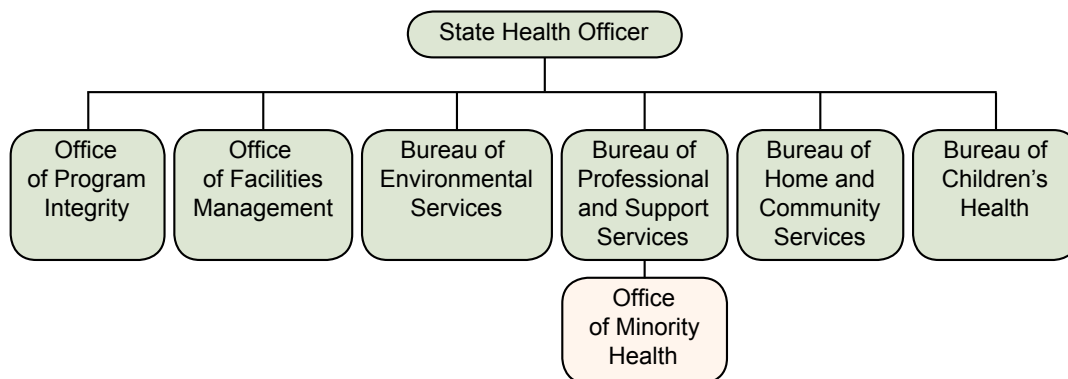
Overview

	Funding for MH/HD Activities	Personnel Dedicated to MH/HD	MH/HD Unit	MH/HD Advisory Body	State MH/HD Legislation or Mandate	MH/HD Strategic Plan	Evaluation of MH/HD Activities
Alabama	✓	✓	✓	✓	✗	✓	✓
Total Affirmative Responses out of 46	30	38	36	36	27	36	39

Organization, Infrastructure and Resources

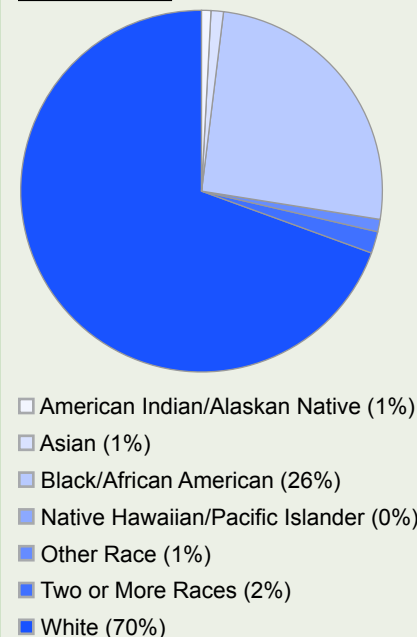
The following is a simplified organizational chart that demonstrates the location of the state's racial/ethnic minority health focal point in relation to the State/Territorial Health Official and other key public health leadership:

Alabama Department of Public Health

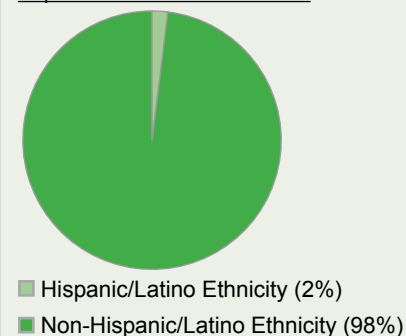


Total State Population:
4,599,030

Racial Distribution



Hispanic/Latino Ethnic Distribution



Note: People can self-identify as members of any racial group in the Census, as well as report having Hispanic/Latino ethnicity.

Source: 2006 American Community Survey, US Census Bureau

Strategic Planning

Eliminating health disparities is an overarching principle of the Alabama Department of Public Health's strategic plan, though the goals within the plan are not specific to racial/ethnic health disparities. In addition to the state plan, the Department's Office of Minority Health maintains a strategic plan for eliminating racial/ethnic health disparities and promoting minority health in the state that contains the following goals:

- Goal I Improve access to quality health services for minorities and underserved populations.
- Goal II Enhance awareness among all Alabamians at the state and community level regarding the health care needs of minority populations
- Goal III Increase minority representation and cultural competency in the health care industry through recruiting and retaining minority health and medical professionals
- Goal IV Compile and disseminate information related to funding and grant opportunities which will enhance the economic and health status of minority populations
- Goal V Facilitate community engagement, participation and empowerment through collaboration with policy makers
- Goal VI Promote minority presence and participation in departmental planning and policy-making

Partnerships

- The ADPH consults with an internal Health Disparities Advisory Council regarding racial/ethnic minority health and health disparities (MH/HD) issues in the state. This Council assures a coordinated, Department-wide approach to addressing the elimination of health disparities.
- MH/HD activities are conducted and coordinated across multiple ADPH program offices.
- ADPH maintains partnerships with an array of entities active in MH/HD including: local health departments and governments, tribal government, other state government agencies, health departments in other states, federal government, ADPH supported MH/HD advisory bodies, community-based, non-profit and faith-based organizations, corporations, health systems, foundations, professional associations, clinical networks, schools, universities, and the media.

Human Capital Investments

The following staff dedicates all or part of their work hours to MH/HD activities for the Alabama Department of Public Health:

Job Category	Total Number Dedicated to MH/HD	% of Work Hours Each Spends on MH/HD Activities
Administrator/Director	2	100%
Policy or Program Officer	1	100%
Public Information Specialist	1	100%
Administrative/Clerical Staff	1	50%

Financial Investments

Fifty percent of the budget for the ADPH's Office of Minority Health is provided by a State Partnership Grant from the Federal Office of Minority Health, and 50% of its funding is derived from State bureau and program offices. Specific financial data on ADPH MH/HD funding streams were not reported.

Activities

Community Based Assessment of State-Recognized American Indian Tribes

Beginning in 2006, Community Health Navigators from Alabama's American Indian Tribes have been trained by ADPH to administer health assessments in their respective tribal communities. These assessments gather data on the health status and medical histories of tribal members, and the data are used to identify the health issues and needs of each tribe.

Partners and Funding

Alabama Commission on Indian Affairs, representatives from the state's eight recognized tribes, the State's Office of Minority Health and Office of Health Statistics; funding of \$15,000 is derived from the OMH/DHHS State Partnership Minority Health Grant.

Activity Outcomes

Detailed information on the health practices and attitudes of American Indians in the state, trained health workers in tribal communities, partnerships between ADPH and Alabama's tribal leadership, and the foundation for tribal health status profiles

Evaluation Methods

Grant progress reports and analysis of health assessment data

Heart Truth for Women Campaign

Since 2006, The Heart Truth for Women Campaign has trained health outreach workers from seven counties with a disproportionate burden of chronic disease, to conduct heart health awareness activities at the community level for at-risk women of color. Each trained representative pledged to conduct at least four cardiovascular health outreach activities in their county using Heart Truth training materials. Feedback from trainers is used to tailor heart health messages for at-risk minority populations.

Partners and Funding

National Heart, Lung and Blood Institute at the National Institutes of Health (\$5,000), Alabama's Nutrition and Physical Activity Unit, and Offices of Women's and Minority Health, and representatives from seven counties with high chronic disease burdens

Activity Outcomes

Targeted, culturally-appropriate cardiovascular health messages, trained local health workers on cardiovascular health outreach, increased awareness regarding cardiovascular health in at-risk communities

Evaluation Methods

Progress reports from trained health workers on their cardiovascular health activities

New Leaf Choices for Healthy Living and Physical Activity

This evidence-based chronic disease reduction program has trained health outreach workers since 2005 to promote healthy lifestyles and weight reduction among underserved women and women of color ages 18 to 64. Over 25 community health advisors currently implement the New Leaf curriculum in 10 counties with rural, underserved populations. Feedback from health care advisors and program results are used to develop unique healthy lifestyle messages for underserved women of color.

Partners and Funding

Blue Cross and Blue Shield (\$12,000/yr), Office of Minority Health (\$8,000/yr) and Office of Women's Health at the US Department of Health and Human Services (\$5,000/yr), ADPH Bureaus and Office of Minority Health, Alabama Cooperative Extension Services, University of Alabama, local hospitals, community- and faith-based organizations

Activity Outcomes

Increased awareness about the importance of good nutrition and physical activity to health status and the effects of obesity on the health outcomes of underserved women of color

Evaluation Methods

The Department of Nutrition at the University of Alabama tracks participant weight loss, completion of the education program, and conducts pre- and post-program evaluations.

Activities continued...

Go Red for Women's Health

This cardiovascular health campaign for women of color began in 2005, through Red Dress heart health activities at local health departments. Activities informed participants about the risk factors for cardiovascular disease among women of color and ways women could reduce those risks.

Partners and Funding

ADPH's Cardiovascular Division, Offices of Minority and Women's Health, local health departments, American Heart Association, Baptist Health Care System, with funding derived from the OMH/DHHS State Partnership Grant

Activity Outcomes

Increased collaboration between public and private health entities on outreach efforts to women of color regarding cardiovascular health, greater awareness about cardiovascular health among participants

Evaluation Methods

Track number of activity participants, number of prevention activity kits distributed to health care providers

Health College Connection Program at Tuskegee University

As part of the ADPH's efforts to reduce racial/ethnic health disparities in the state, this state partnership conducts recruiting efforts to promote minority representation in the health professions. It also seeks to increase the number of health care professionals from racial/ethnic minority groups who practice in Alabama.

Partners and Funding

State Partnership Grant Funding (\$30,000) from the Federal Office of Minority Health (OMH/DHHS)

Activity Outcomes

Increase in the number of minority health professionals studying and practicing in Alabama

Evaluation Methods

Track number of minority students entering into health professions education, number who enter the health professions workforce, and number who practice in Alabama

Alabama's primary contact for racial/ethnic minority health and health disparities is:

Gwendolyn Lipscomb, MS, RN
 Director, Office of Minority Health
 Alabama Department of Health
<http://www.adph.org/minorityhealth>
 Phone: (334) 206-5432